

# DRINKING WATER SOURCE PROTECTION

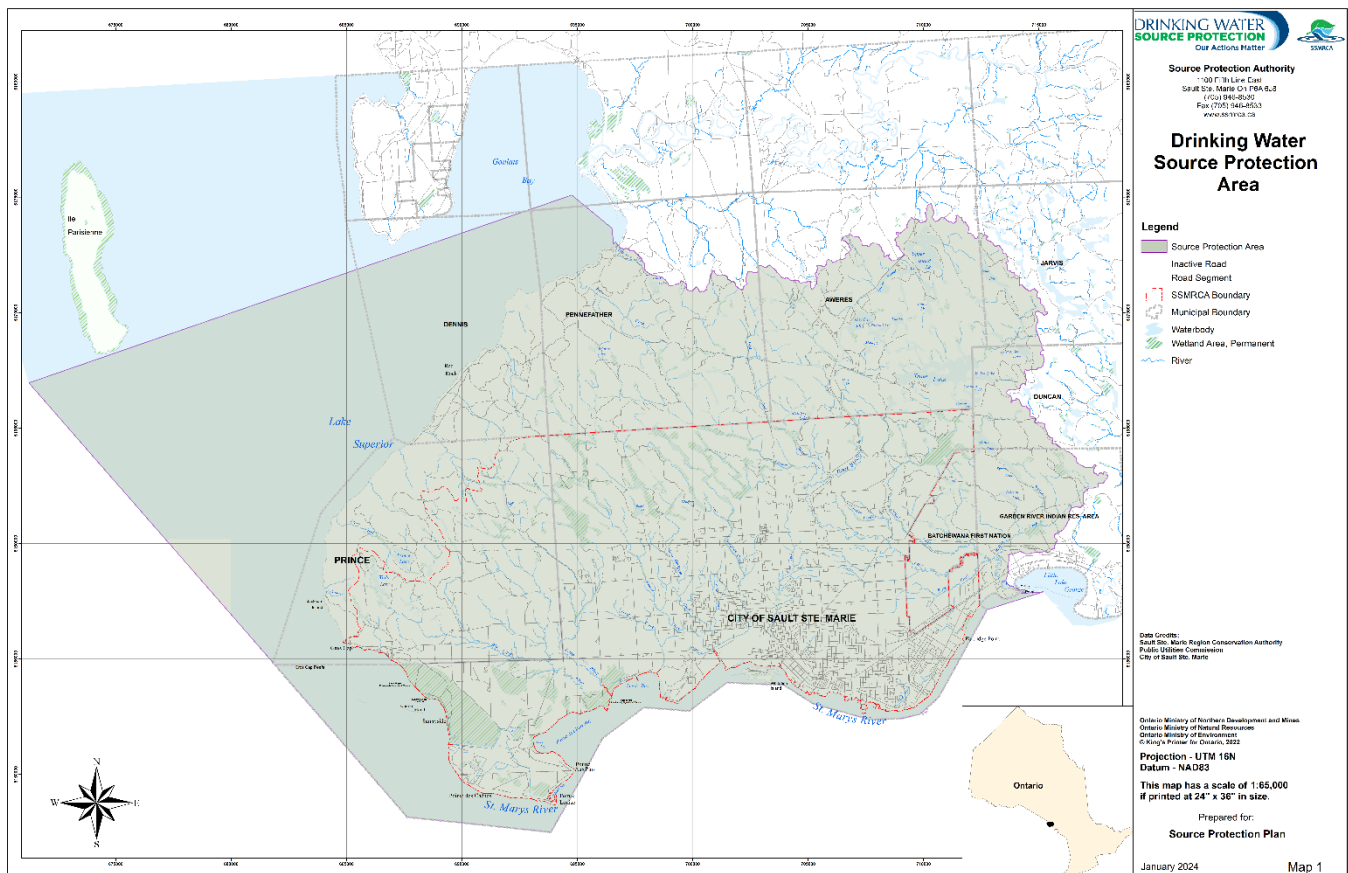
Our Actions Matter



## 2023 Source Protection Annual Progress Report

### I. Introduction

This annual progress report outlines the progress made in implementing our source protection plan for the Sault Ste. Marie Region Source Protection Area, as required by the Clean Water Act and regulations.



## II. A message from your local Source Protection Committee

- P : Progressing Well/On Target – The majority of the source protection plan policies have been implemented and/or are progressing.**
- S : Satisfactory – Some of the source protection plan policies have been implemented and/or are progressing.
- L : Limited progress – A few of the source protection plan policies have been implemented and/or are progressing.

The members of Source Protection Committee (SPC) have participated in the delivery of the Annual Report and the development of the policies in the Source Protection Plan for the Sault Ste. Marie Region Source Protection Area.

The SPC has reviewed the information included in the Source Protection Annual Progress Report and is pleased with the progress achieved to date. The Source Protection Plan implementation for significant and moderate threats is on target with all of the policy delivery mechanisms completed or underway.

The SPC is satisfied with the municipal implementation efforts to ensure that the Official Plans and Zoning By-Laws conform with pertinent policies. The Risk Management Office, located within the City of Sault Ste. Marie, has developed appropriate screening mechanisms for the identification of potential threats. The Risk Management Official and Risk Management Inspectors are working with local landowners and business operators to develop Risk Management Plans. The initial outreach and education goals from the Plan have been completed and communication materials are being updated as new information is available.

### III. Our Watershed

To learn more, please read our assessment report and source protection plan.

The Sault Ste. Marie Region Source Protection Area is situated within the District of Algoma, along the north shore of the St. Marys River and the eastern shore of Lake Superior. The planning area takes in the municipality of Sault Ste. Marie, the Township of Prince and includes a portion of the unorganized townships of Dennis, Pennefather, Aweres, Jarvis and Duncan as well as areas of the Garden River and Batchewana First Nations. Both Lake Superior and the St. Marys River are shared resources of Canada and the United States of America. The boundary of the Source Protection Area along its entire width, extends out to the international border. There are 38 Source Protection Areas in 19 Source Protection Regions in the province.

The City of Sault Ste. Marie depends on surface water from Lake Superior at Gros Cap and groundwater from six (6) wells within the St. Marys River watershed. The Source Protection Committee's Source Protection Plan has been developed for the municipal drinking water sources in the Sault Ste. Marie Region Source Protection Area. It specifically applies to the six (6) municipal wells and the surface water intake (Gros Cap). This plan excludes private wells.

Four Significant Drinking Water Threats, as defined by the Clean Water Act, have been identified in the Sault Ste. Marie Region Source Protection Area. Three of these threats are located in the Wellhead Protection Area for the Lorna and Goulais Well sites and consist of a sanitary forcemain, municipal snow dump site and the commercial handling and storage of fuel. One local significant threat (Event Based Point Spill Event) was identified in the Intake Protection Zone of the Gros Cap Drinking Water intake (Prince Township) in Lake Superior. As these threats were identified as significant, policies have been developed with the objective of decreasing the potential risk associated with each.

This Source Protection Plan is the culmination of the Sault Ste. Marie Region Source Protection Committee's efforts to draft policies to ensure that existing or future threats to the Sault Ste. Marie municipal drinking water sources cease to be or never become significant threats.

## IV. At a Glance: Progress on Source Protection Plan Implementation

### 1. Source Protection Plan Policies

- P : Progressing Well/On Target – The majority of the source protection plan policies have been implemented and/or are progressing.**
- S : Satisfactory – Some of the source protection plan policies have been implemented and/or are progressing.
- L : Limited progress – A few of the source protection plan policies have been implemented and/or are progressing.

All of the policies (100%) that address significant drinking water threats have been or are in the process of being implemented in accordance with the timelines set out in our source protection plan.

### 2. Municipal Progress: Addressing Risks on the Ground

Our source protection area, that includes the City of Sault Ste. Marie and Township of Prince, have vulnerable areas where significant drinking water threats policies apply.

- P : Progressing Well/On Target – The majority of the source protection plan policies have been implemented and/or are progressing.**
- S : Satisfactory – Some of the source protection plan policies have been implemented and/or are progressing.
- L : Limited progress – A few of the source protection plan policies have been implemented and/or are progressing.

Municipalities (City of Sault Ste. Marie and Township of Prince) in our source protection area are in progress or have completed the review and update of their Official Plan and/or Zoning By-Laws to ensure it conforms with the local source protection plan under the Planning Act.

### 3. Septic Inspections

Not applicable to our source protection area, as the septic systems are not threats within vulnerable areas.

### 4. Risk Management Plans

- P : Progressing Well/On Target – The majority of the source protection plan policies have been implemented and/or are progressing.**
- S : Satisfactory – Some of the source protection plan policies have been implemented and/or are progressing.**
- L : Limited progress – A few of the source protection plan policies have been implemented and/or are progressing.**

No risk management plans (RMP) were established during 2023 in our source protection area.

Three (3) RMPs have been established to date.

Two (2) inspections were carried out or planned by a Risk Management Official /Inspector for prohibited or regulated activities during 2023.

There is a 100% compliance rate with the risk management plans established in our source protection region.

## 5. Provincial Progress: Addressing Risks on the Ground

- P : Progressing Well/On Target – The majority of the source protection plan policies have been implemented and/or are progressing.**
- S : Satisfactory – Some of the source protection plan policies have been implemented and/or are progressing.
- L : Limited progress – A few of the source protection plan policies have been implemented and/or are progressing.

Ontario ministries are reviewing previously issued provincial approvals (i.e. prescribed instruments, such as environmental compliance approvals under the Environmental Protection Act) where they have been identified as a tool in our plan to address existing activities that pose a significant risk to sources of drinking water. The provincial approvals are being amended or revoked where necessary to conform with plan policies. The ministries have completed the review and changes for 100% of previously issued provincial approvals in our source protection area.

## 6. Source Protection Awareness and Change in Behaviour

Four (4) Drinking Water Protection Zone signs were installed in our source protection area on Provincial Highways.

At this time no additional signage has been installed.

## 7. Source Protection Plan Policies: Summary of Delays

No delays occurred.

## 8. Source Water Quality: Monitoring and Actions

Although not identified as an “issue” under the definition in the Technical Rules, we are continuing to monitor water quality in the east aquifer in relation to concentrations of Chloride, Sodium and Manganese.

## 9. Science-based Assessment Reports: Work Plans

Science-based work plans were not required to be implemented for our updated Source Protection Plan.

## 10. More from the Watershed

To learn more about our source protection area, visit <https://ssmrca.ca/source-water-protection/about-source-water-protection/>



Provincial Groundwater Monitoring Network well sampling work.



Steelton Well northeastern signage on Second Line West.



Steelton Pump House established 1914.