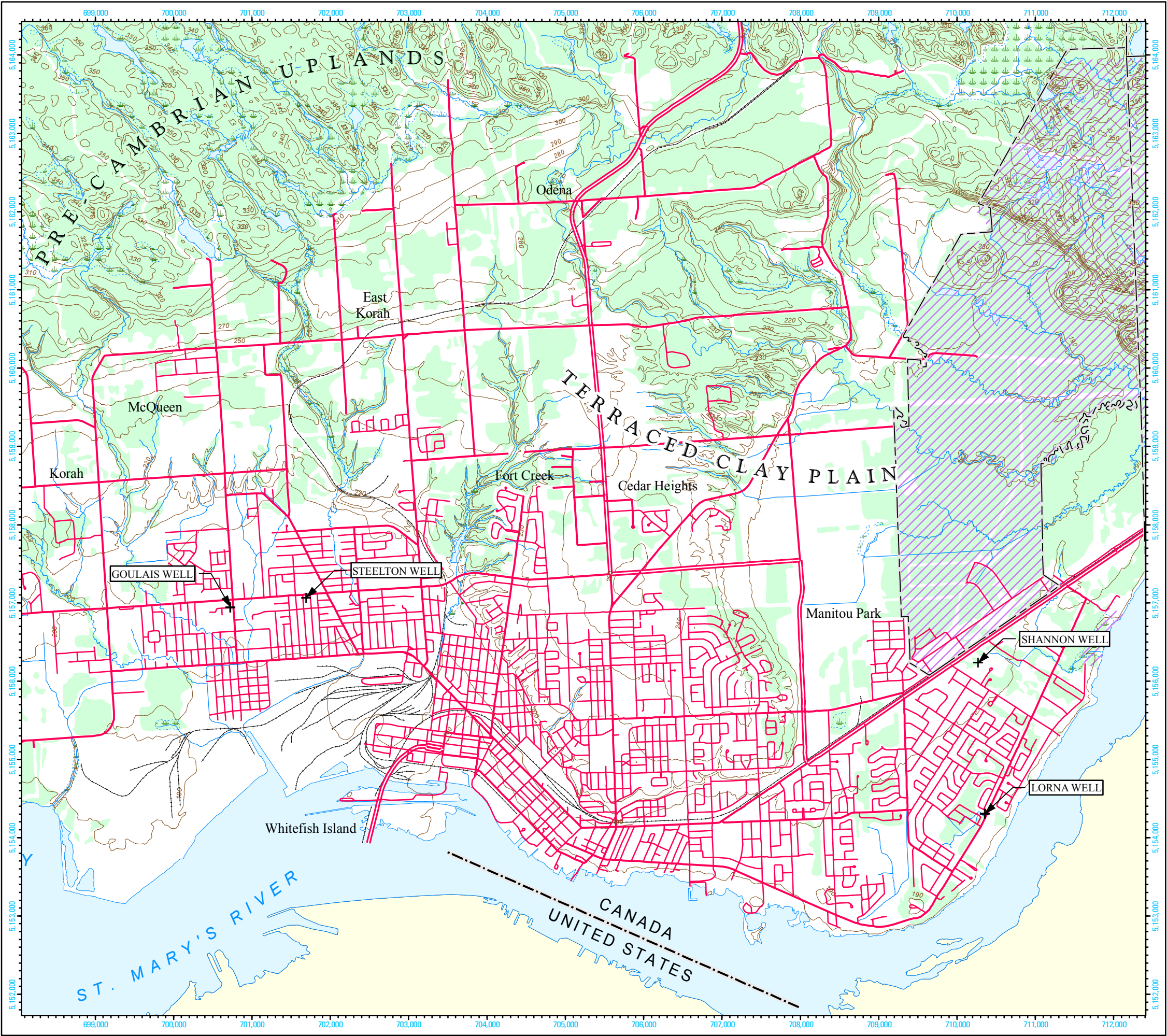


Sault Ste. Marie Region  
Conservation Authority  
**Figure 1**  
**Study Area Location**



- + Municipal Well Location
- Municipal Boundary
- Expressway / Highway
- Collector
- Local / Street
- Rail
- Surface Contour
- River / Stream
- Intermittent Stream
- Batchewana First Nation Lands
- Lake / Pond
- Wetland
- Wooded Area

DATA SOURCES

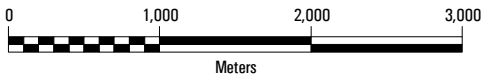
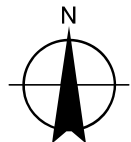
1. Ontario Ministry of Natural Resources
2. Ontario Ministry of Environment
3. Queen's Printer for Ontario, 2005
4. PUC Services Inc.

NOTES

1. Capture Zones are based on the permitted pumping rate for the well.

DISCLAIMER

This map was created with datasets reflecting different levels of spatial and temporal accuracy. R.J. Burnside & Associates Limited is not responsible for the spatial, temporal, attribute, or other aspects of the data used in the creation of this map.



Scale: 1:50,000  
Mapping Date: 06 February, 2007

Projection: UTM Zone 16  
Datum: NAD 83

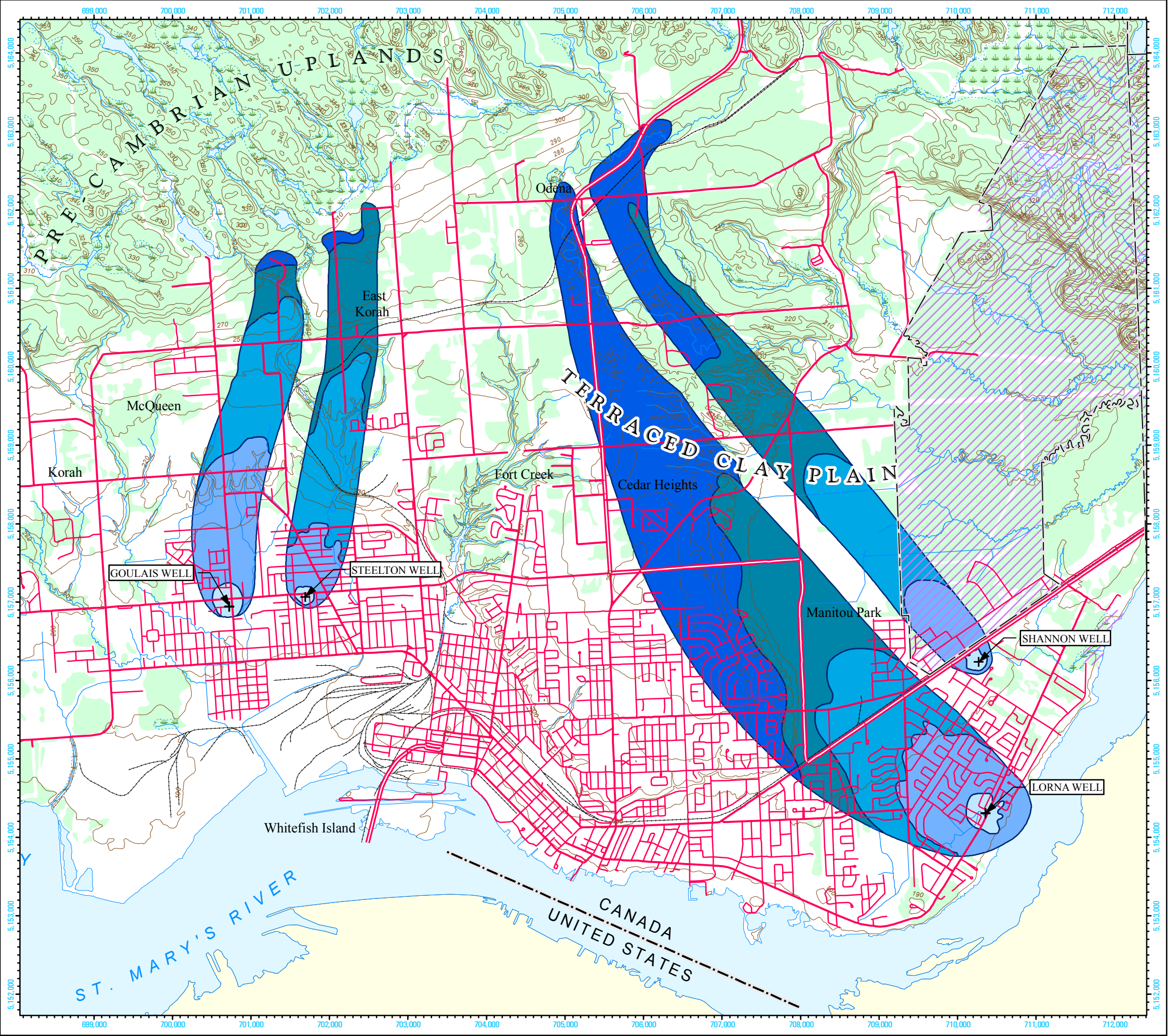
Project: MNA11179.0



BURNSIDE

X:\Projects\MNA11179\Map\Cartography\Figure\_1\_Study\_Area\_Location.mxd





Sault Ste. Marie Region  
Conservation Authority

**Figure 2**  
**Location of Municipal Wells**  
**and Wellhead Protection Areas**

- |   |                         |  |                               |
|---|-------------------------|--|-------------------------------|
| + | Municipal Well Location |  | Batchewana First Nation Lands |
| — | Municipal Boundary      |  | 50 Day Capture Zone           |
|   | Expressway / Highway    |  | 2 Year Capture Zone           |
|   | Collector               |  | 5 Year Capture Zone           |
|   | Local / Street          |  | 10 Year Capture Zone          |
|   | Rail                    |  | 25 Year Capture Zone          |
|   | Surface Contour         |  | Lake / Pond                   |
|   | River / Stream          |  | Wetland                       |
|   | Intermittent Stream     |  | Wooded Area                   |

DATA SOURCES

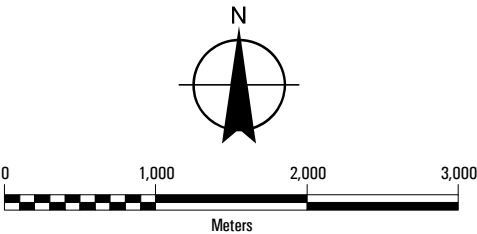
1. Ontario Ministry of Natural Resources 2. Ontario Ministry of Environment  
© Queen's Printer for Ontario, 2005 3. Corporation of the City of Sault Ste. Marie  
4. PUC Services Inc.

NOTES

1. Capture Zones are based on the permitted pumping rate for the well.

DISCLAIMER

This map was created with datasets reflecting different levels of spatial and temporal accuracy.  
R.J. Burnside & Associates Limited is not responsible for the spatial, temporal, attribute, or other  
aspects of the data used in the creation of this map.



Scale: 1:50,000  
Mapping Date: 06 February, 2007

Projection: UTM Zone 16  
Datum: NAD 83

Project: MNA11179.0





**Figure 3A**  
**Preliminary Mapping of**  
**Properties Potentially**  
**Containing a Well Within**  
**Lorna and Shannon**  
**Capture Zones**

- + Municipal Well Location
- ~ River / Stream
- - - Intermittent Stream
- Batchewana First Nation Lands
- 2 Year Capture Zone (50 Day Capture Zone Internal)
- Lake / Pond
- Wetland
- Preliminary Assessment Results - Possible Well
- Preliminary Assessment Results - No Well

DATA SOURCES

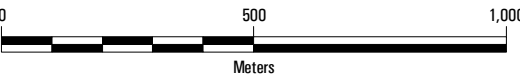
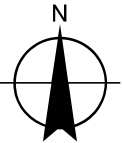
1. Ontario Ministry of Natural Resources 2. Ontario Ministry of Environment  
© Queen's Printer for Ontario, 2005 3. Corporation of the City of Sault Ste. Marie  
4. PUC Services Inc.

NOTES

1. Capture Zones are based on the permitted pumping rate for the well.

DISCLAIMER

This map was created with datasets reflecting different levels of spatial and temporal accuracy.  
R.J. Burnside & Associates Limited is not responsible for the spatial, temporal, attribute, or other  
aspects of the data used in the creation of this map.



Scale: 1:15,000  
Mapping Date: 06 February, 2007

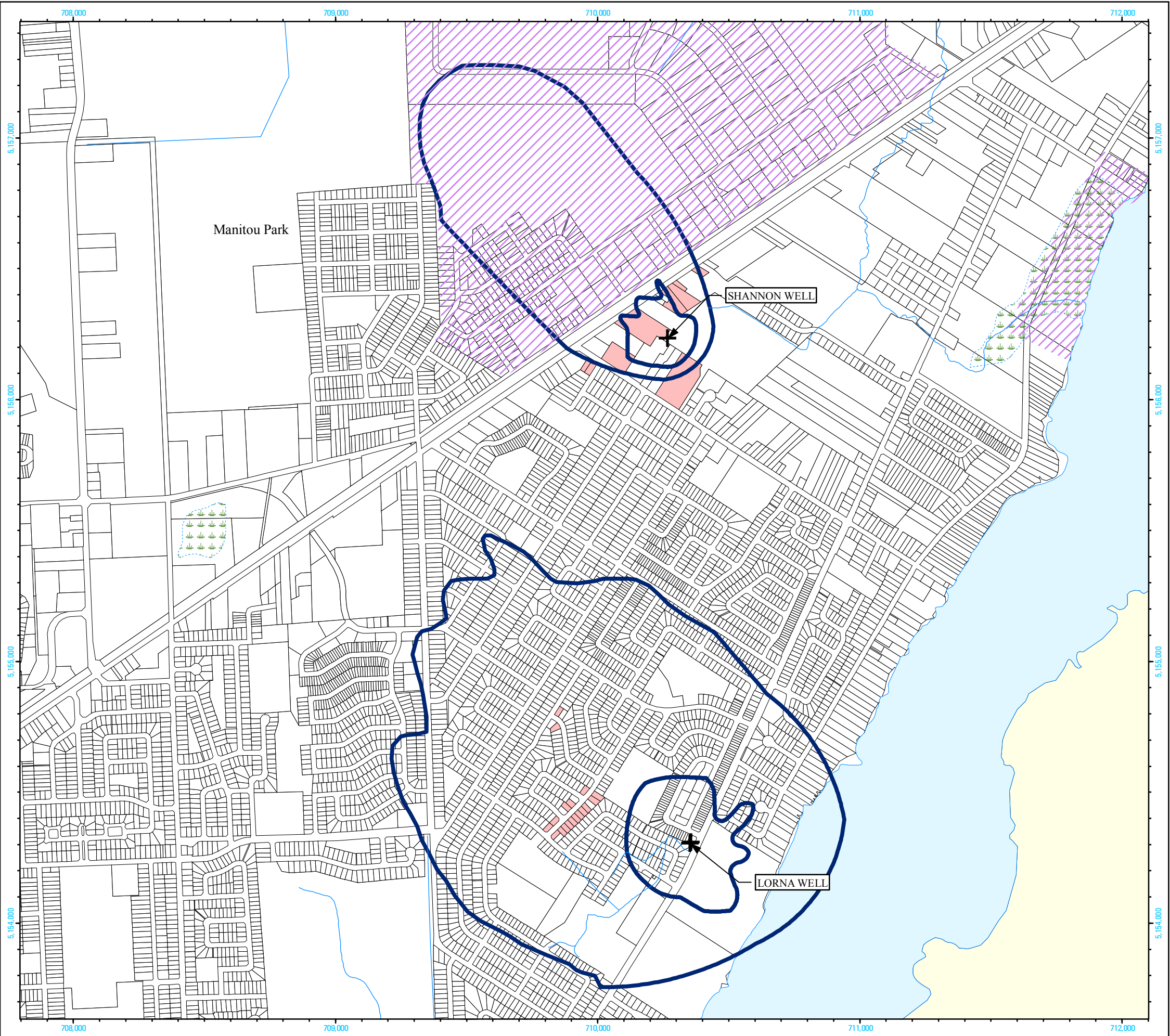
Projection: UTM Zone 16  
Datum: NAD 83

Project: MNA11179.0

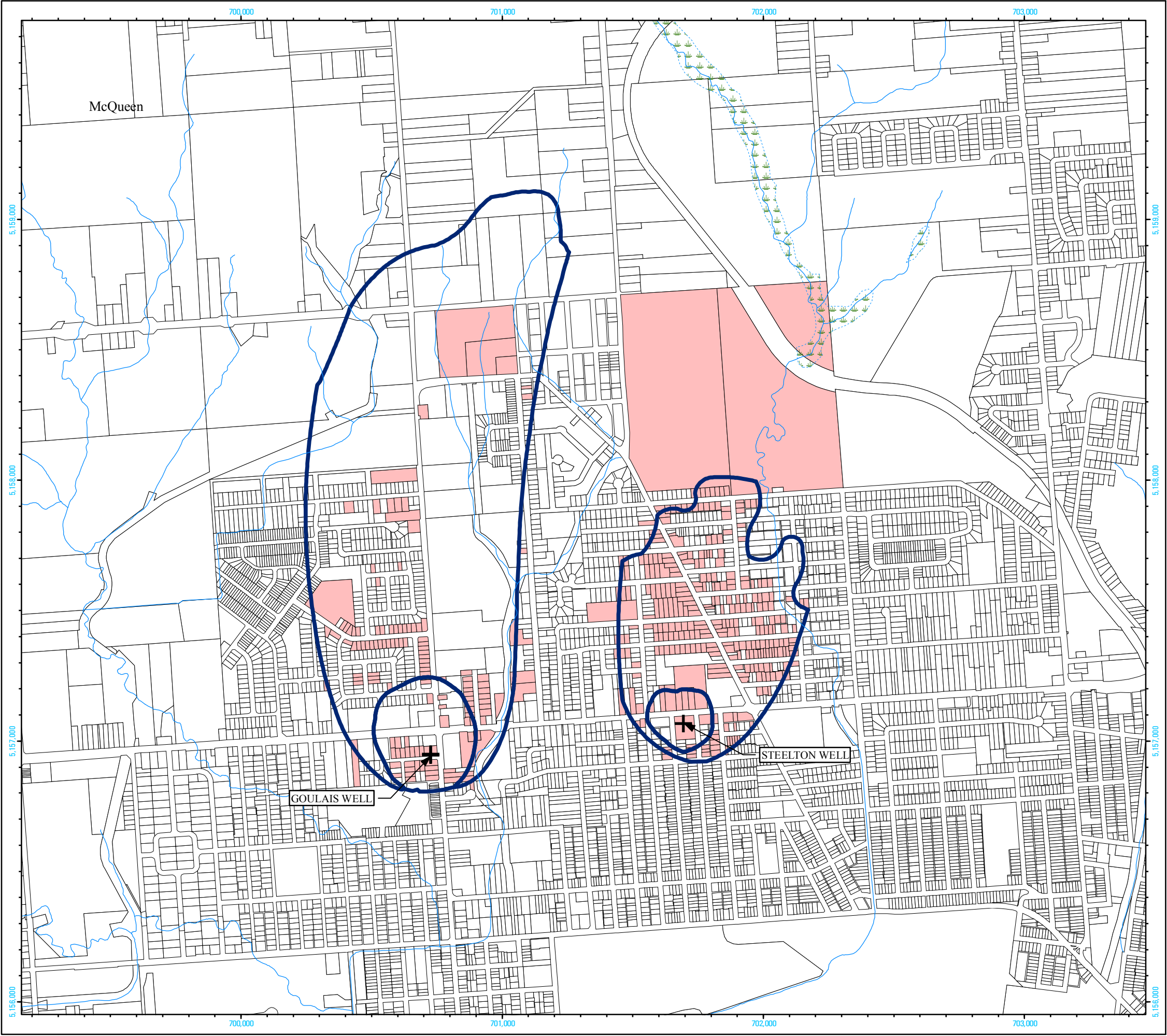


**BURNSIDE**

X:\Projects\MNA\MNA11179\Map\Cartography\Figure\_3A\_Lorna\_Shannon\_Prelim.mxd







# Figure 3B Preliminary Mapping of Properties Potentially Containing a Well Within Goulais and Steelton Capture Zones

- + Municipal Well Location
- ~ River / Stream
- - - Intermittent Stream
- 2 Year Capture Zone (50 Day Capture Zone Internal)
- ☪ Lake / Pond
- ☪ Wetland
- Red Box Preliminary Assessment Results - Possible Well
- White Box Preliminary Assessment Results - No Well

DATA SOURCES

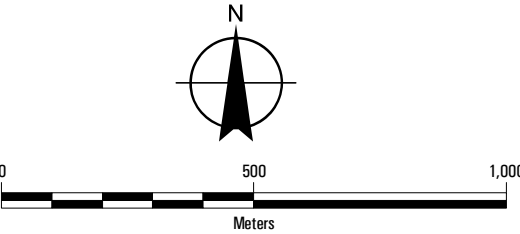
1. Ontario Ministry of Natural Resources 2. Ontario Ministry of Environment  
© Queen's Printer for Ontario, 2005 3. Corporation of the City of Sault Ste. Marie  
4. PUC Services Inc.

NOTES

1. Capture Zones are based on the permitted pumping rate for the well.

DISCLAIMER

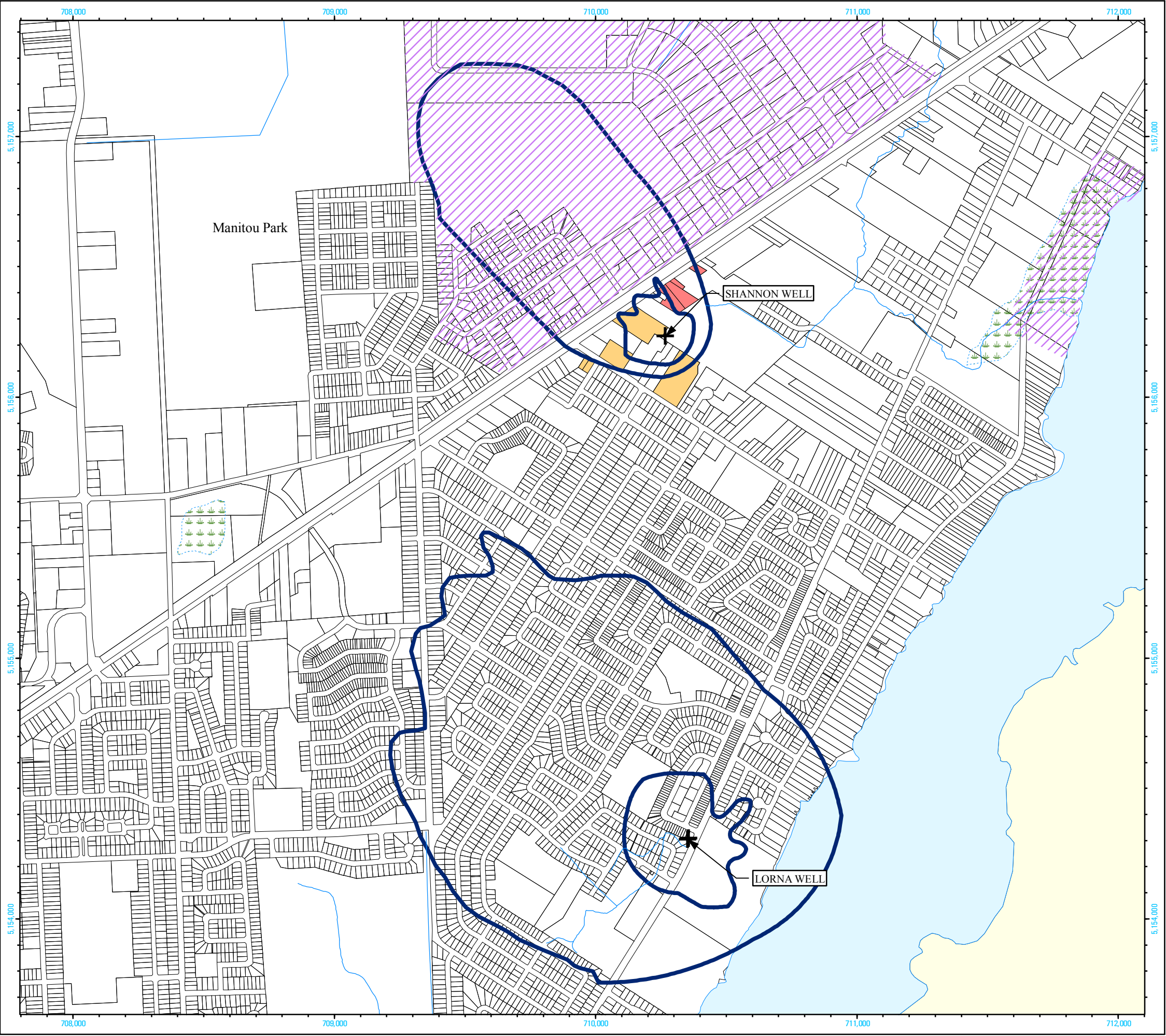
This map was created with datasets reflecting different levels of spatial and temporal accuracy.  
R.J. Burnside & Associates Limited is not responsible for the spatial, temporal, attribute, or other  
aspects of the data used in the creation of this map.



Scale: 1:15,000  
Mapping Date: 06 February, 2007  
Projection: UTM Zone 16  
Datum: NAD 83  
Project: MNA11179.0







Sault Ste. Marie Region  
Conservation Authority

**Figure 4A**  
**Final Mapping of Properties**  
**Potentially Containing a Well**  
**Within Lorna and Shannon**  
**Capture Zones**

- Municipal Well Location
- River / Stream
- Intermittent Stream
- Batchewana First Nation Lands
- 2 Year Capture Zone (50 Day Capture Zone Internal)
- Lake / Pond
- Wetland
- Confirmed Well VIA Field Survey
- Potential Property with Well - GIS Query
- Not Likely to Have Wells
- Outside 2 Year Capture Zone - No Analysis

DATA SOURCES

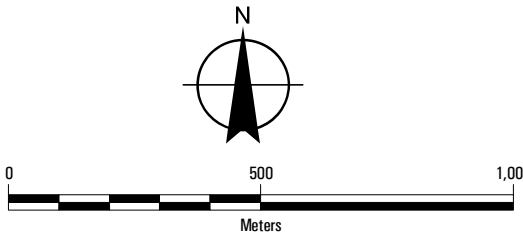
1. Ontario Ministry of Natural Resources 2. Ontario Ministry of Environment  
© Queen's Printer for Ontario, 2005 3. Corporation of the City of Sault Ste. Marie  
4. PUC Services Inc.

NOTES

1. Capture Zones are based on the permitted pumping rate for the well.

DISCLAIMER

This map was created with datasets reflecting different levels of spatial and temporal accuracy.  
R.J. Burnside & Associates Limited is not responsible for the spatial, temporal, attribute, or other  
aspects of the data used in the creation of this map.



Scale: 1:15,000  
Mapping Date: 06 February, 2007

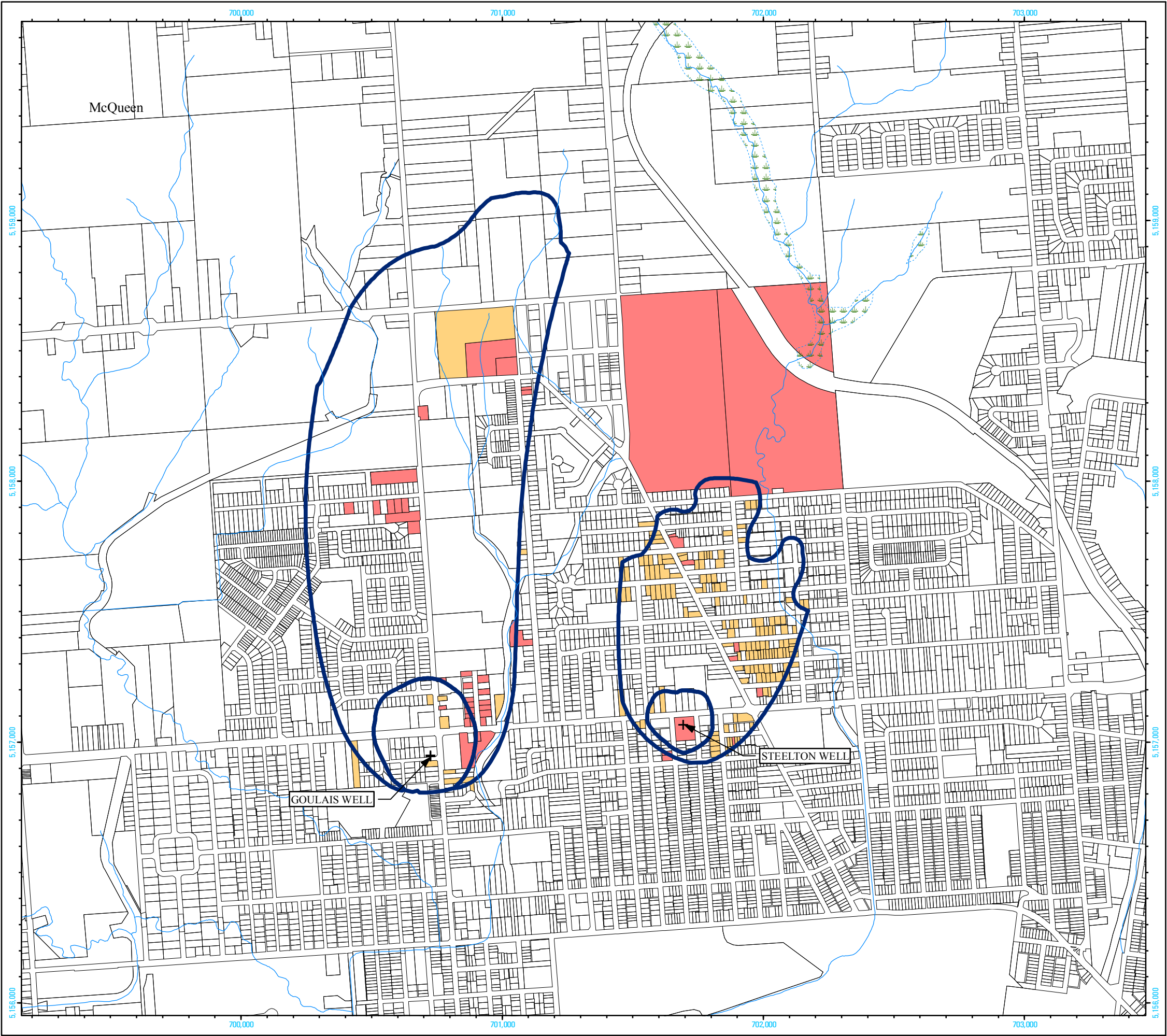
Projection: UTM Zone 16  
Datum: NAD 83

Project: MNA11179.0





**Figure 4B**  
**Final Mapping of Properties**  
**Potentially Containing a Well**  
**Within Goulais and Steelton**  
**Capture Zones**



- + Municipal Well Location
- ~~~~~ River / Stream
- ~~~~~ Intermittent Stream
- 2 Year Capture Zone (50 Day Capture Zone Internal)
- Lake / Pond
- Wetland
- Confirmed Well VIA Field Survey
- Potential Property with Well - GIS Query
- Not Likely to Have Wells
- Outside 2 Year Capture Zone - No Analysis

DATA SOURCES

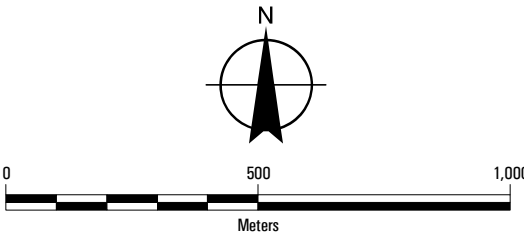
1. Ontario Ministry of Natural Resources
2. Ontario Ministry of Environment
- © Queen's Printer for Ontario, 2005
3. Corporation of the City of Sault Ste. Marie
4. PUC Services Inc.

NOTES

1. Capture Zones are based on the permitted pumping rate for the well.

DISCLAIMER

This map was created with datasets reflecting different levels of spatial and temporal accuracy. R.J. Burnside & Associates Limited is not responsible for the spatial, temporal, attribute, or other aspects of the data used in the creation of this map.



Scale: 1:15,000  
Mapping Date: 06 February, 2007

Projection: UTM Zone 16  
Datum: NAD 83

Project: MNA11179.0

