









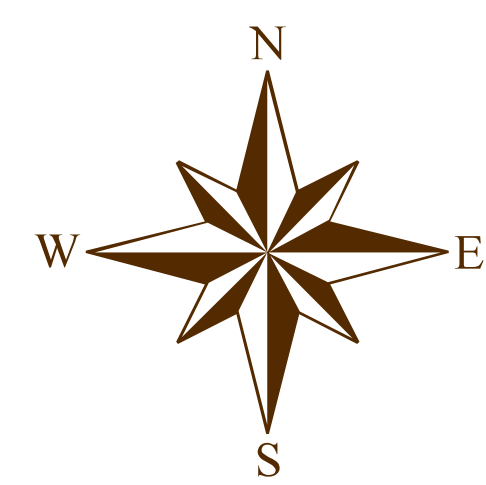
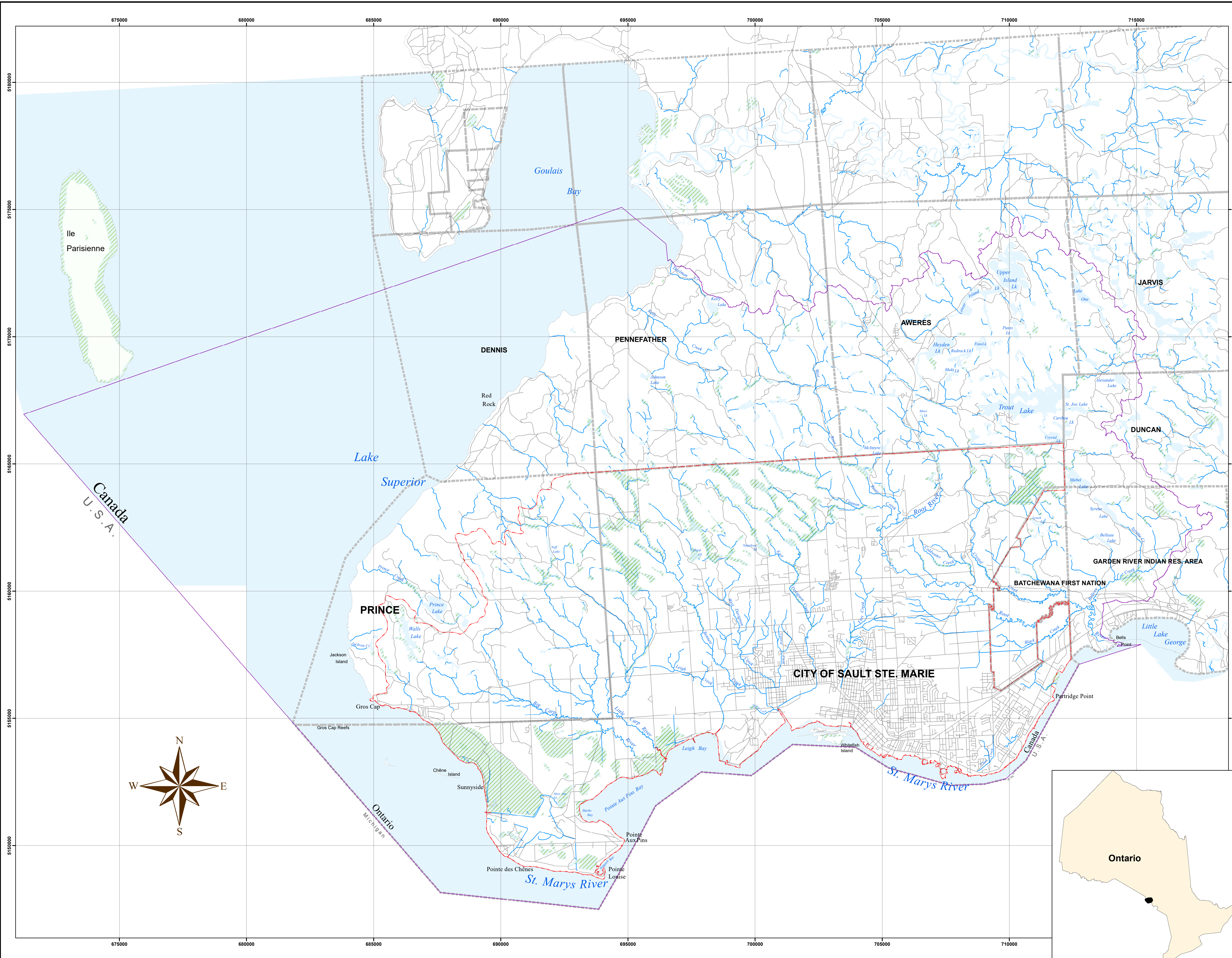
Source Protection Authority

1100 Fifth Line East
Sault Ste. Marie On P6A 6J8
(705) 946-8530
Fax (705) 946-8533
www.ssmrca.ca

Drinking Water Source Protection Area

Legend

-  Source Protection Area
-  SSMRCA Boundary
-  Municipal Boundary
-  Waterbody
-  Wetland Area, Permanent
-  River
-  Inactive Road
-  Road Segment



Data Credits:
Sault Ste. Marie Region Conservation Authority
Public Utilities Commission
City of Sault Ste. Marie
Ministry of Northern Development and Mines
Ministry of Natural Resources and Forestry
Ministry of Environment, Conservation and Parks
© Queen's Printer for Ontario, 2019

Projection - UTM 16N
Datum - NAD83

This map has a scale of 1:65,000
if printed at 24" x 36" in size.

Prepared for:
Assessment Report
Issues Evaluation and Threats Inventory

