

Source Protection Authority

1100 Fifth Line East
Sault Ste. Marie On P6A 6J8
(705) 946-8530
Fax (705) 946-8533
www.ssmrca.ca

Vulnerability Scores in HVAs

Legend

- High Vulnerable Area (HVA)
 - <30 High Vulnerability (IV-6)
 - Significant Groundwater Recharge Area
 - Waterbody
 - Wetland Area
 - River
 - Intermittent Stream
- Transportation
 - Airstrip Paved
 - Hydro Line
 - Railway
 - Road Segment
 - Inactive Road
- Source Protection Area
 - Source Protection Area
 - SSMRCA Boundary
 - Municipal

NOTE: Base for map is DEM Hillshaded at azimuth of 315 degrees and altitude of 45 degrees.

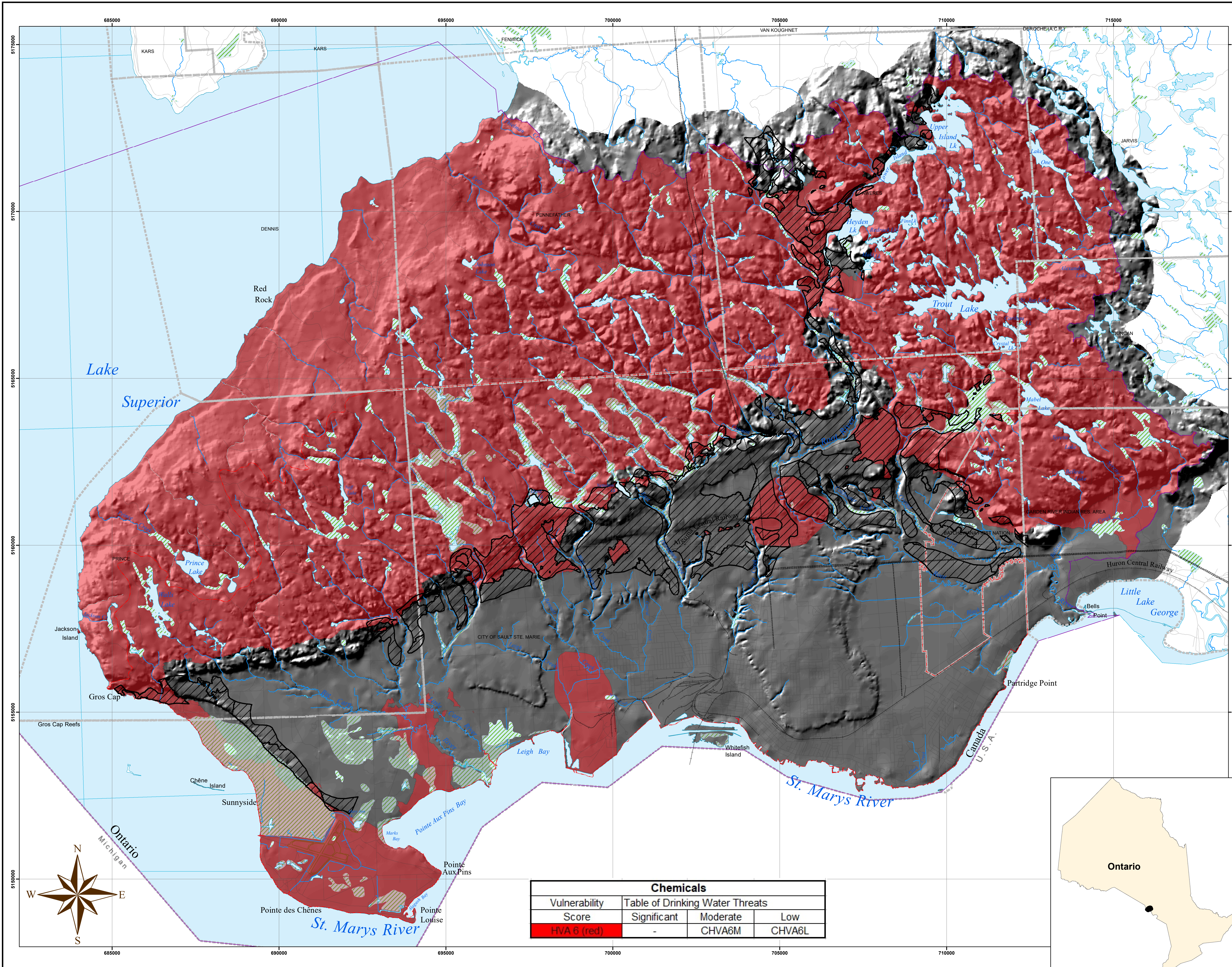
Data Credits:
Sault Ste. Marie Region Conservation Authority
Public Utilities Commission / R.J. Burnside
City of Sault Ste. Marie
Ministry of Northern Development and Mines
Ministry of Natural Resources and Forestry
Ministry of Environment, Conservation and Parks
© Queen's Printer for Ontario, 2019

Projection - UTM 16N
Datum - NAD83
This map has a scale of 1:50,000 if printed at 24" x 36" in size.

Prepared for:
Assessment Report
Water Quality Risk Assessment

February 2020

Figure 8



Chemicals			
Vulnerability Score	Table of Drinking Water Threats		
	Significant	Moderate	Low
HVA 6 (red)	-	CHVA6M	CHVA6L

