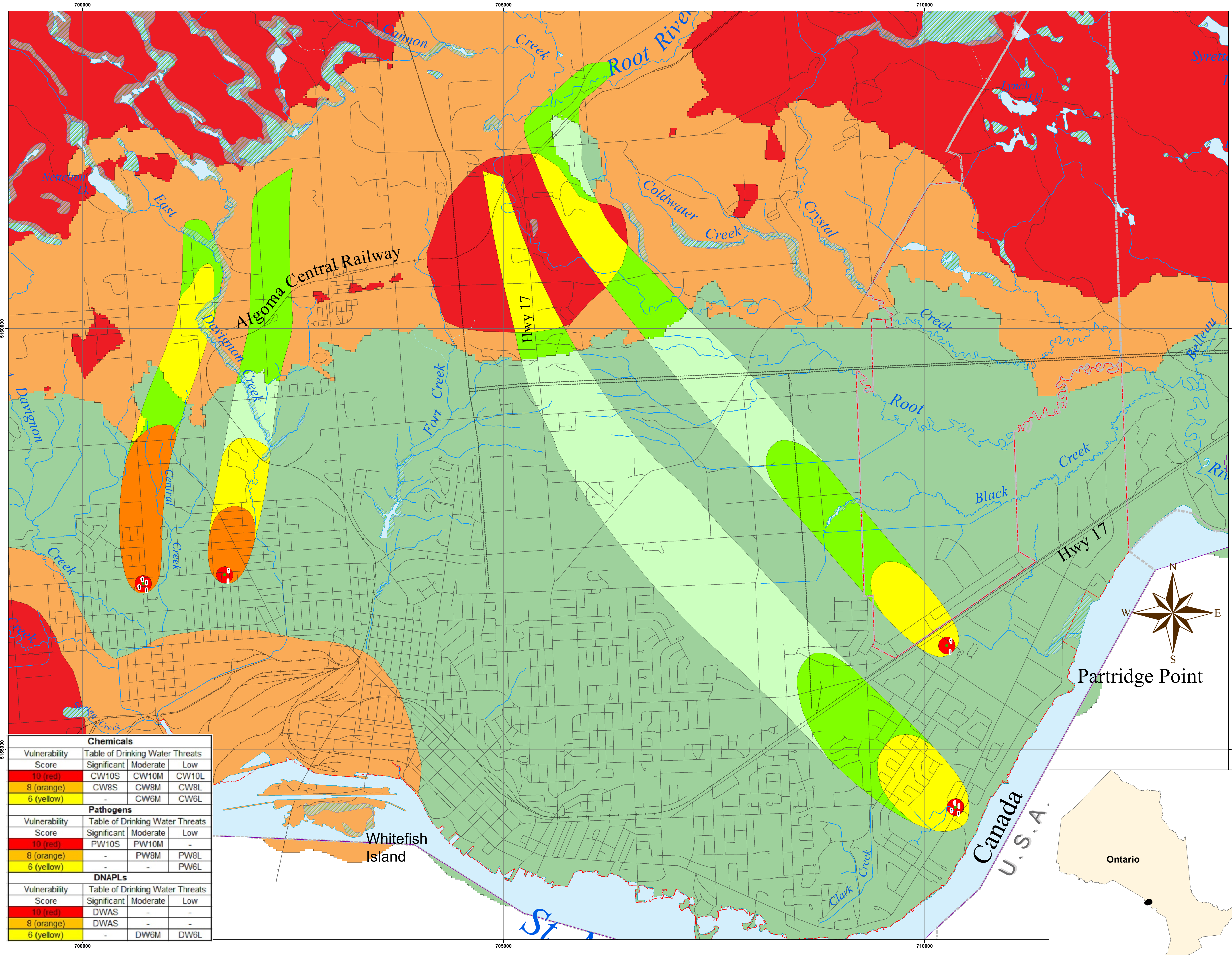


Source Protection Authority
1100 Fifth Line East
Sault Ste. Marie On P6A 6J8
(705) 946-8530
Fax (705) 946-8533
www.ssmrca.ca

Vulnerability Scores in WHPA

Legend

- Wells
- Intrinsic Susceptibility Index**
 - <30 High Vulnerability (IV-6)
 - >30 and <80 Medium Vulnerability (IV-4)
 - >80 Low Vulnerability (IV-2)
- Vulnerability Scoring**
 - 2 = Low
 - 4
 - 6
 - 8
 - 10 = High
- Waterbody
- Wetland Area
- River
- Intermittent Stream
- Road Segment
- Inactive Road
- Airstrip Paved
- Hydro Line
- Railway
- SSMRCA Boundary
- Source Protection Area
- Municipal



Chemicals			
Vulnerability Score	Table of Drinking Water Threats		
	Significant	Moderate	Low
10 (red)	CW10S	CW10M	CW10L
8 (orange)	CW8S	CW8M	CW8L
6 (yellow)	-	CW6M	CW6L

Pathogens			
Vulnerability Score	Table of Drinking Water Threats		
	Significant	Moderate	Low
10 (red)	PW10S	PW10M	-
8 (orange)	-	PW8M	PW8L
6 (yellow)	-	-	PW6L

DNAPLs			
Vulnerability Score	Table of Drinking Water Threats		
	Significant	Moderate	Low
10 (red)	DWAS	-	-
8 (orange)	DWAS	-	-
6 (yellow)	-	DW6M	DW6L

Data Credits:
Sault Ste. Marie Region Conservation Authority
Public Utilities Commission / R.J. Burnside
City of Sault Ste. Marie
Ministry of Northern Development and Mines
Ministry of Natural Resources and Forestry
Ministry of Environment, Conservation and Parks
© Queen's Printer for Ontario, 2019

Projection - UTM 16N
Datum - NAD83
This map has a scale of 1:20,000
if printed at 24" x 36" in size.

Prepared for:
Assessment Report
Water Quality Risk Assessment