

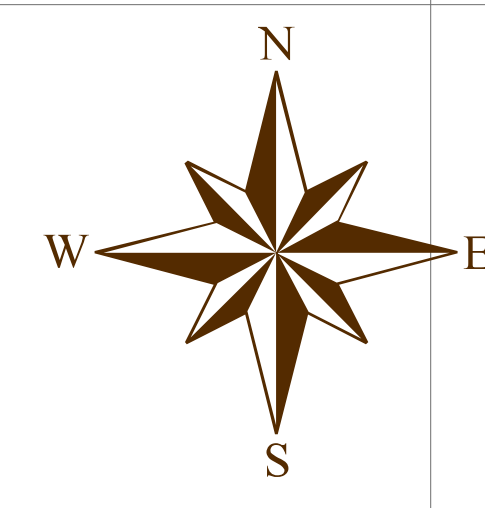
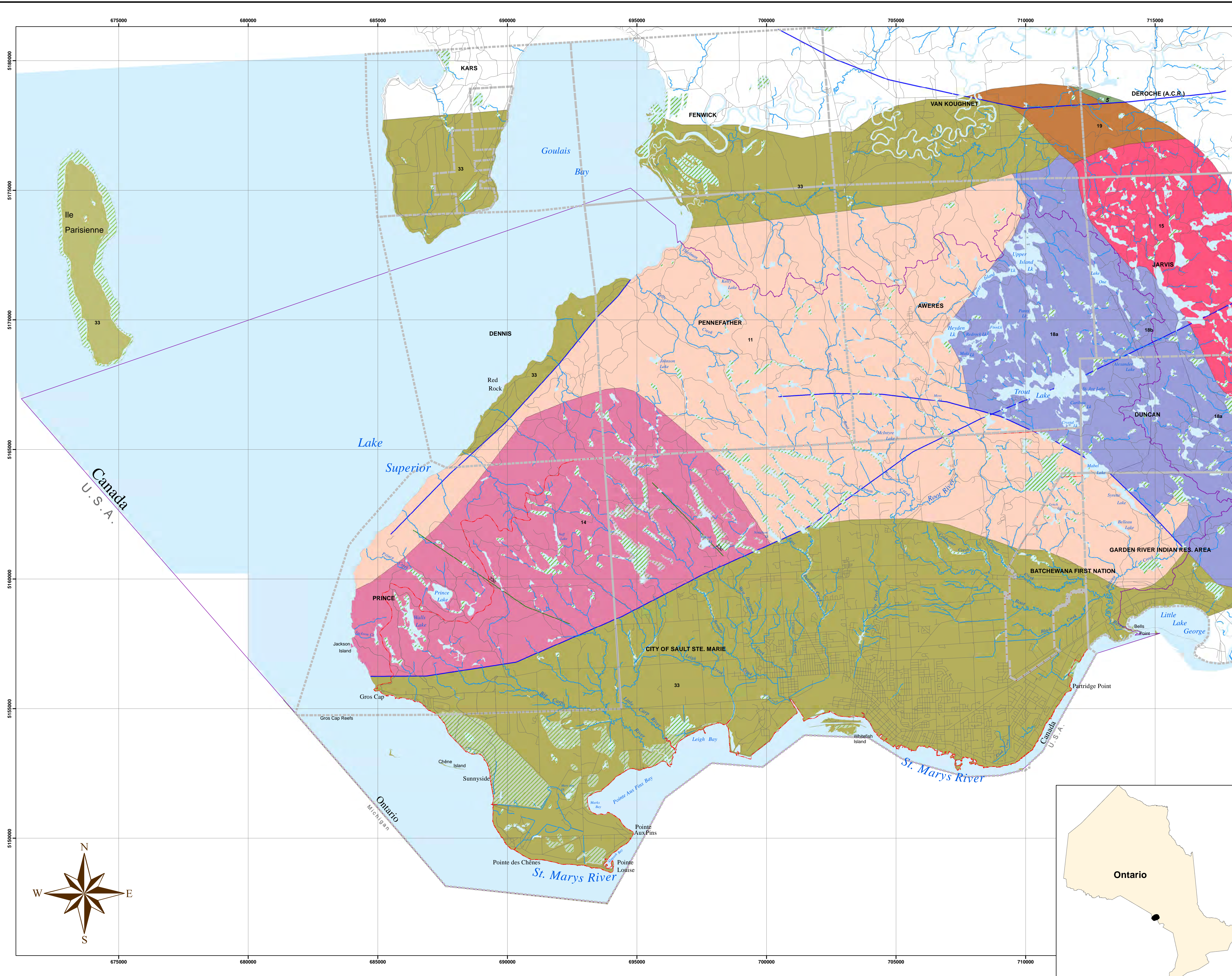
Source Protection Authority

1100 Fifth Line East
Sault Ste. Marie On P6A 6J8
(705) 946-8530
Fax (705) 946-8533
www.ssmrca.ca

Bedrock Geology

Legend

- 49 Conglomerate, sandstone, shale, dolostone: Potsdam Gp.; Nepean Fm.; Covey Hill Fm.
 - 33 Jacobsville Gp.; Oronto Gp
 - 19 Cobalt Gp.
 - 18a Conglomerate, wacke, arkose, quartz arenite, argillite, limestone, dolostone
 - 18b Volcanic rocks of the Elliot Lake Gp.
 - 15 Massive granodiorite to granite
 - 14-Diorite-monzodiorite-granodiorite suite
 - 11 Gneissic tonalite suite
 - 5 Mafic to intermediate metavolcanic rocks
-
- Bedrock Surface Fault
 - Dike 23c-North Channel
 - Road Segment
 - Waterbody
 - Wetland Area, Permanent
 - River
 - SSMRCA Boundary
 - Source Protection Area
 - Municipal Boundary



Data Credits:
Sault Ste. Marie Region Conservation Authority
Public Utilities Commission
City of Sault Ste. Marie
Ministry of Northern Development and Mines
Ministry of Natural Resources and Forestry
Ministry of Environment, Conservation and Parks
© Queen's Printer for Ontario, 2019

Projection - UTM 16N
Datum - NAD83
This map has a scale of 1:65,000
if printed at 22" x 36" in size.

Prepared for:
Assessment Report
Watershed Characterization