

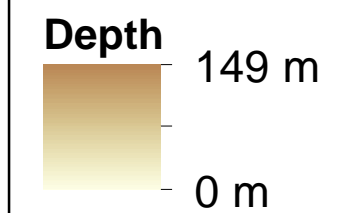
**Source Protection Authority**







1100 Fifth Line East  
Sault Ste. Marie On P6A 6J8  
(705) 946-8530  
Fax (705) 946-8533  
www.ssmrca.ca

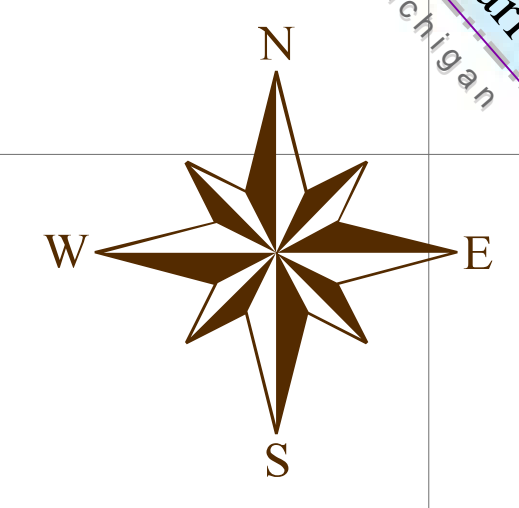
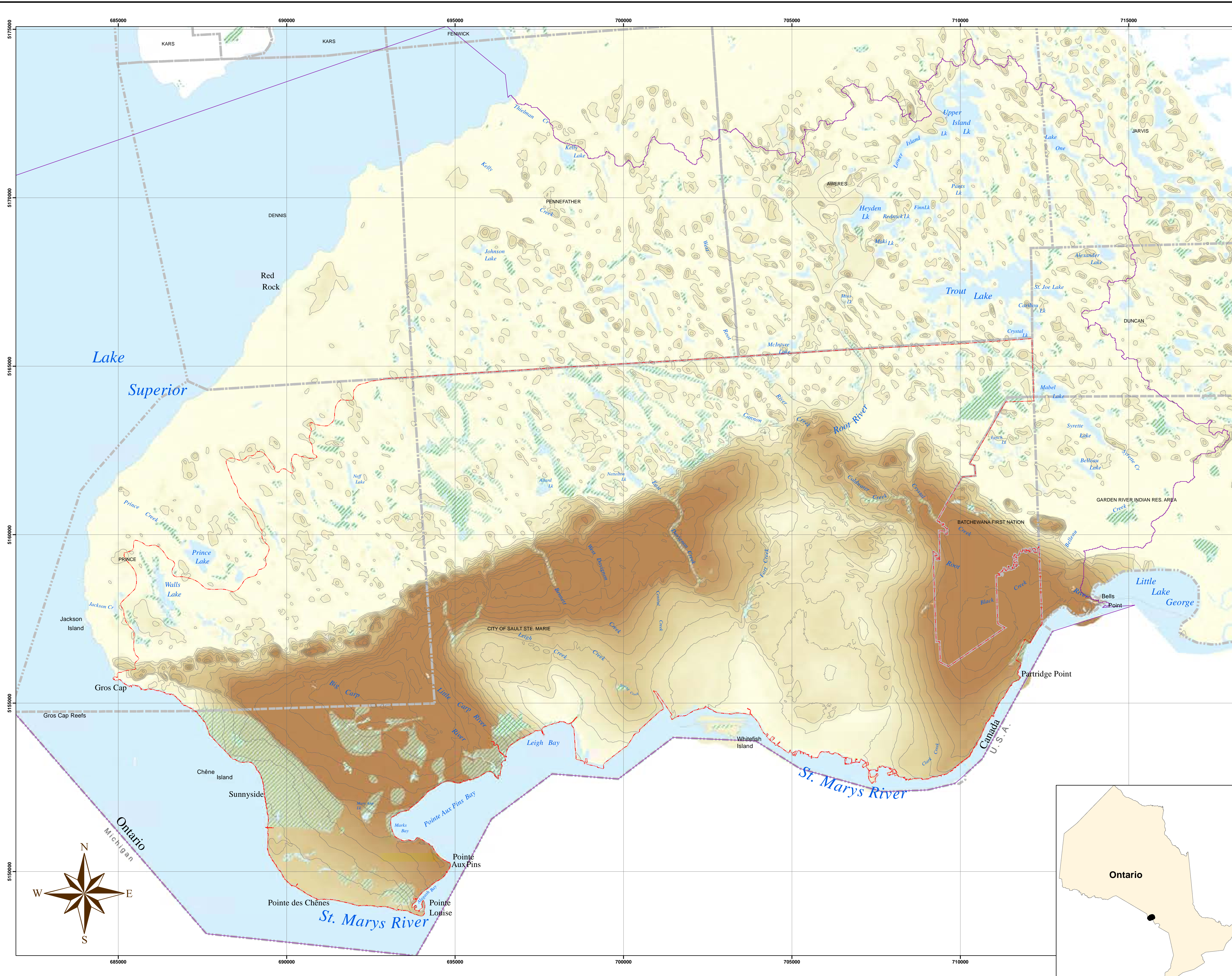
# Overburden Thickness

**Legend**

**Overburden Thickness**



-  Overburden Thickness Contour 10m
-  Waterbody
-  Wetland Area, Permanent
-  SSMRCA Boundary
-  Source Protection Area
-  Municipal



**Data Credits:**  
Sault Ste. Marie Region Conservation Authority  
Public Utilities Commission  
R. J. Burnside and Associates  
City of Sault Ste. Marie  
Ministry of Northern Development and Mines  
Ministry of Natural Resources and Forestry  
Ministry of Environment, Conservation and Parks  
© Queen's Printer for Ontario, 2019

**Projection - UTM 16N**  
**Datum - NAD83**  
This map has a scale of 1:50,000  
if printed at 24" x 36" in size.

Prepared for:  
**Assessment Report**  
**Watershed Characterization**