

**Source Protection Authority**

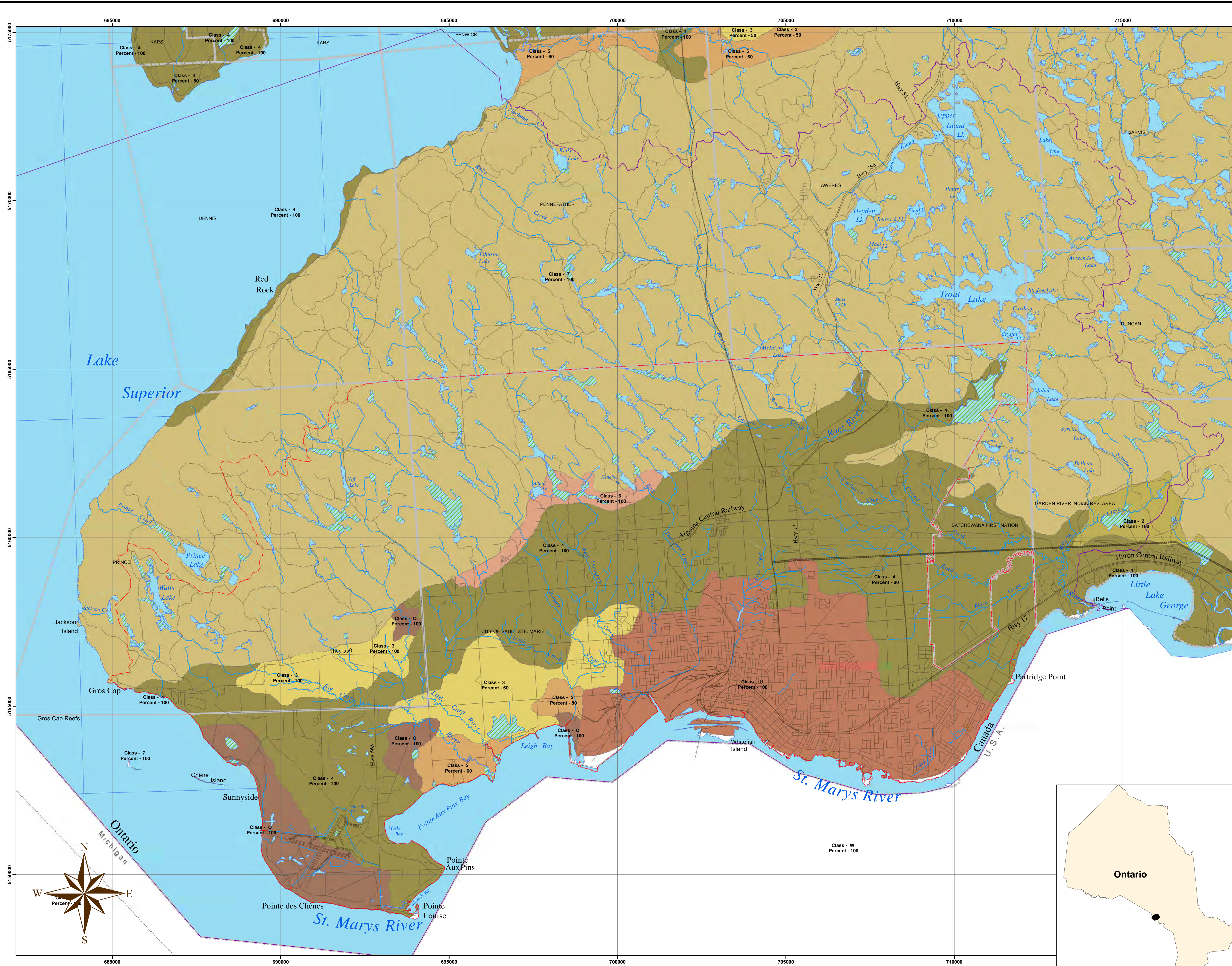
1100 Fifth Line East  
Sault Ste. Marie On P6A 6J8  
(705) 946-8530  
Fax (705) 946-8533  
www.ssmrca.ca

# Land Use Canada Land Inventory Data

City of Sault Ste. Marie  
Township of Prince  
Unorganized Townships of Dennis, Pennefather,  
Aweres, Jarvis and Duncan

**Legend**

- Soil Class - Canada Land Inventory (CLI)**
- 2 - Moderate Limitations, Moderate Conservation Practices Required
  - 3 - Moderately Severe Limitations, Range of Crops Restricted or Special Conservation Practices Required
  - 4 - Severe Limitations
  - 5 - Forage Crops Improvement Practices Feasible
  - 6 - Forage Crops Improvement Practices Not Feasible
  - 7 - No Capability for Arable Culture or Permanent Pasture
  - ? - Unmapped Area
  - O - Organic Soils
  - U - Urban Area
- River
- Intermittent Stream
- Airstrip Paved
- Hydro Line
- Railway
- Road
- Inactive Road
- SSMRCA Boundary
- Source Protection Area
- Municipal



**Data Credits:**  
Sault Ste. Marie Region Conservation Authority  
Public Utilities Commission  
City of Sault Ste. Marie  
Ministry of Northern Development and Mines  
Ministry of Natural Resources and Forestry  
Ministry of Environment, Conservation and Parks  
© Queen's Printer for Ontario, 2019

**Projection - UTM 16N**  
**Datum - NAD83**  
This map has a scale of 1:50,000  
if printed at 24" x 36" in size.

Prepared for:  
**Assessment Report**  
**Watershed Characterization**

