

Source Protection Authority
1100 Fifth Line East
Sault Ste. Marie On P6A 6J8
(705) 946-8530
Fax (705) 946-8533
www.ssmrca.ca

Managed Lands

(Lands where nutrients are applied.)

Legend

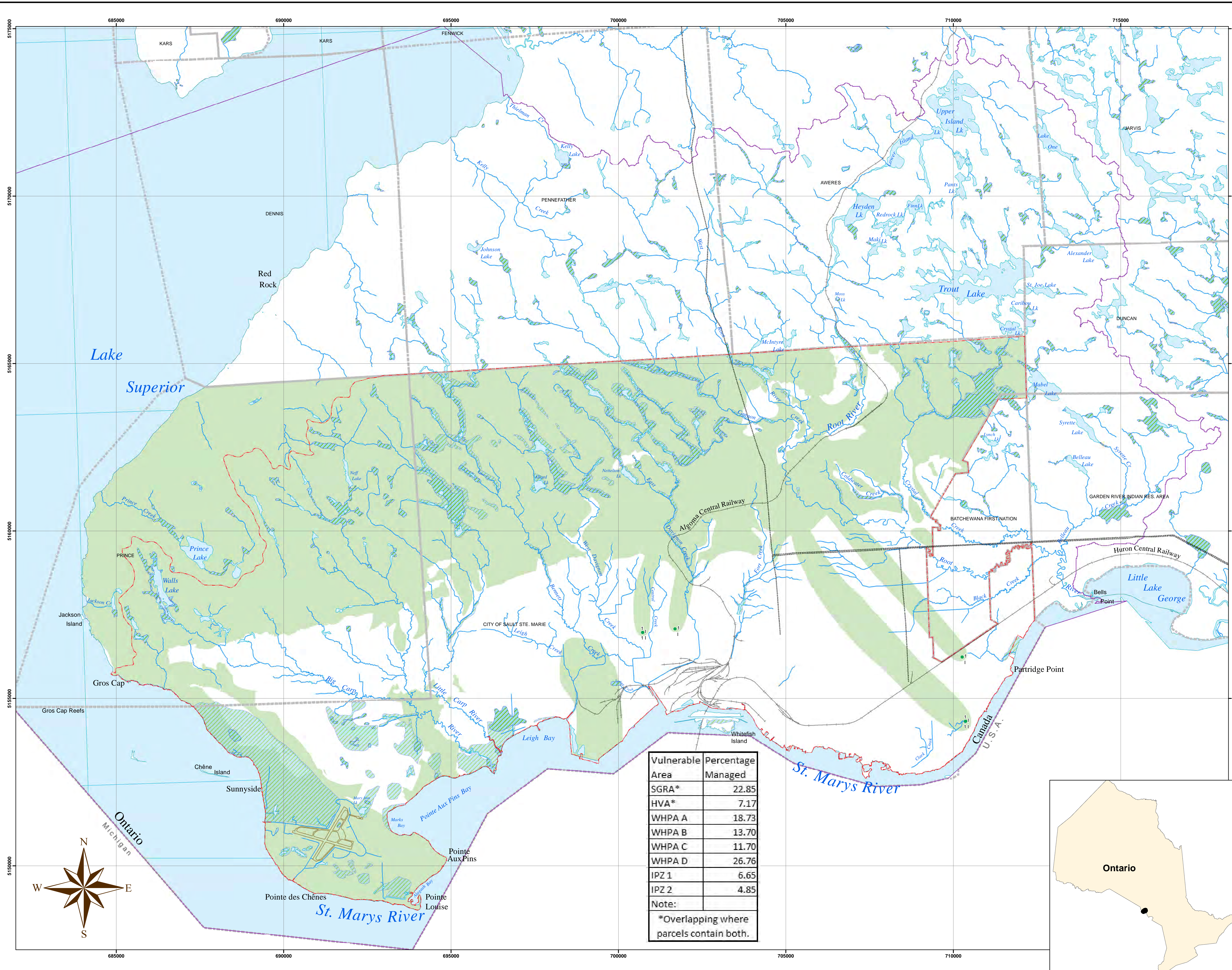
- Municipal Wells
- Managed Lands < 40%
- Managed Lands 40 - 80%
- Managed Lands > 80%
- Airstrip Paved
- Hydro Line
- | Railway
- Waterbody
- Wetland Area
- ~ River
- SSMRCA Boundary
- Source Protection Area
- Municipal

NOTE: See notation in chapter on methodology to ascertain managed lands percentages.

Data Credits:
Sault Ste. Marie Region Conservation Authority
Public Utilities Commission
City of Sault Ste. Marie
Ministry of Northern Development and Mines
Ministry of Natural Resources and Forestry
Ministry of Environment, Conservation and Parks
© Queen's Printer for Ontario, 2019

Projection - UTM 16N
Datum - NAD83
This map has a scale of 1:50,000
if printed at 24" x 36" in size.

Prepared for:
Assessment Report
Watershed Characterization



Vulnerable Area	Percentage Managed
SGRA*	22.85
HVA*	7.17
WHPA A	18.73
WHPA B	13.70
WHPA C	11.70
WHPA D	26.76
IPZ 1	6.65
IPZ 2	4.85
Note: *Overlapping where parcels contain both.	

